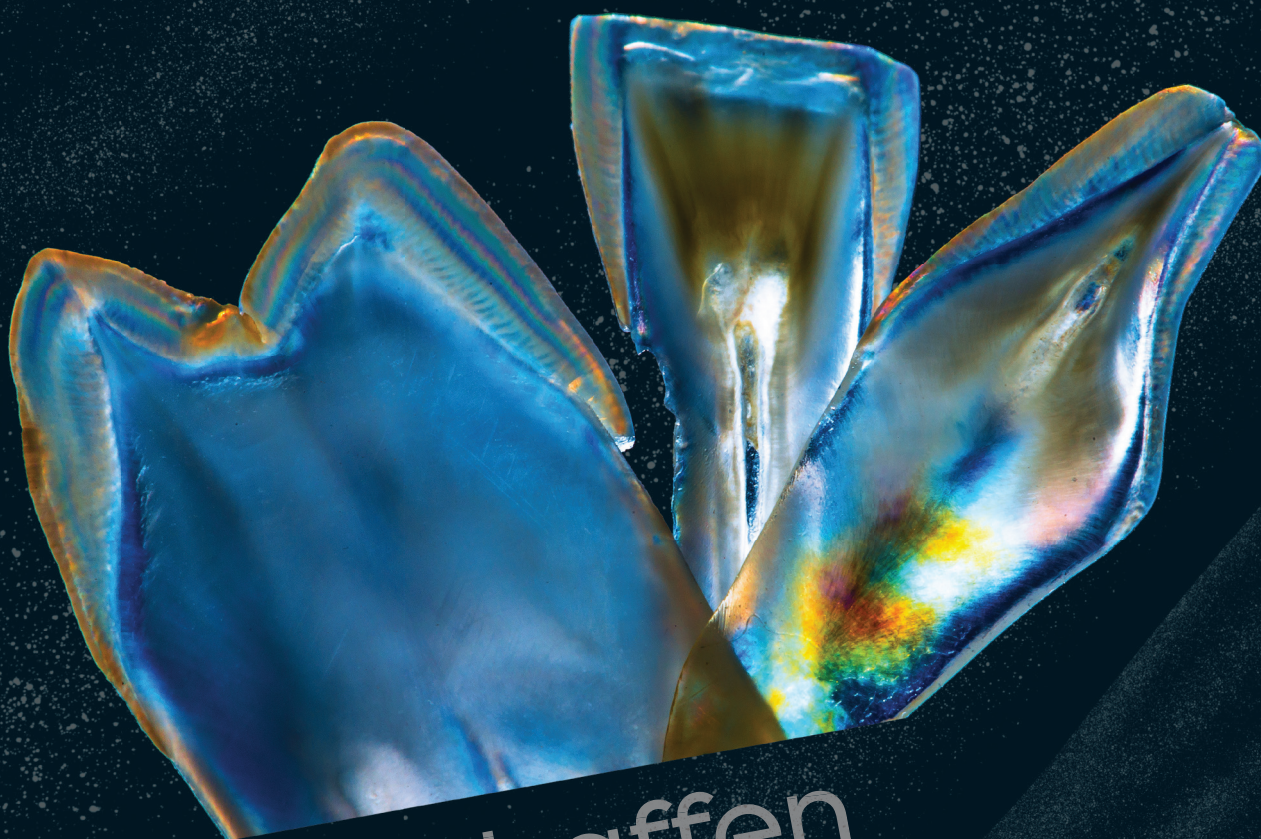




Wagner

Precision Rotary Instruments



Erschaffen

Create



NEW!

AeroFlex™ For

Printed Resins • PMMA • Clear Aligners • Acrylics • Thermo Materials

AeroFlex™ has a reinforced binder that provides positional stability allowing for controlled area contouring, deburring and flash removal. AeroFlex™ quickly eliminates scratches and leaves smooth clearly defined surfaces. In short order your restoration will be ready for a final high shine polish.

AeroFlex™



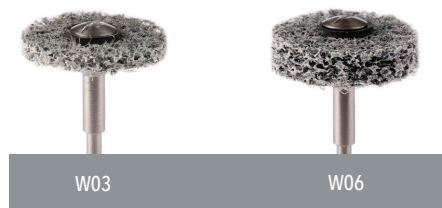
Scotch Brites



NEW!

Lammott Pre Polishers

After layering ceramic, with contouring and texturing micro anatomy complete, the Lammott Pre Polishing instruments will blend anatomy, resulting in a more natural surface texture and luster prior to glazing. Recommended for anteriors, posteriors and veneers.



NEW!

SNOWDRIFT

Ceramic HP Instruments, Smooth cutting, reduced clogging instruments

For Printed Resins • PMMA • Clear Aligners • Acrylics • Thermo Materials



SC Kit





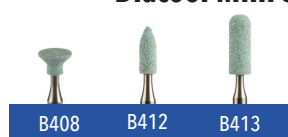
When a greater amount of material needs to be removed, our new Diacool ICE instruments will quickly and easily get the job done. Unique diamond particle shape and size, combined with a new binder, ensure zirconia, lithium disilicate or feldspathic restorations remain cool, thereby reducing the possibility of creating micro fractures while grinding. With only minimal pressure applied, restorations are quickly and safely reduced and shaped. Some ceramists prefer using the coarse version of Diacool ICE; just slightly more abrasive, yet they also remain cool and effective. The large B406 flat edged wheel is an excellent choice for pressed lithium disilicate sprue connector reduction. For final contouring we recommend using our "Berrys", or "Finale" for adjusting thin margins.

Smoother, Gentle Material Removal • Minimal Heat Transfer • Increased Instrument Life

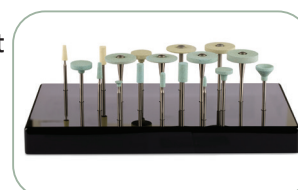
Medium



NEW! Diacool Mini's



DCI Kit



Coarse

The "Berrys"



Our Berry instruments were specifically developed for use with zirconia and lithium disilicate restorative materials. They are infused with a high concentration of uniquely shaped diamond particles that allows for more effective contouring and shaping. The "Berrys" reduce heat transfer, prevent microscopic surface scratches, and leave a smooth pre-polish surface. This smooth surface eliminates the capillary effect that causes stains to be drawn to unwanted areas; that's industry unique, and we are certain you have never experienced diamond infused instruments that perform like our "Berrys".



UltraBerry® Coarse Plus, Diamond Infused Preferred for zirconia contouring



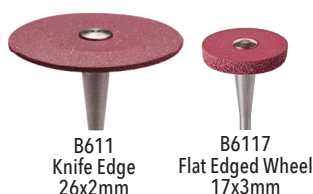
BK Kit



GoldenBerry® Super Fine, Diamond Infused. Places a fast super high shine on zirconia or lithium disilicate restorations



RedBerry® Coarse, Diamond Infused; preferred for zirconia contouring



NEW!



BlueBerry® Medium, Diamond Infused; preferred for lithium disilicate contouring, or as a second step when contouring zirconia



NEW!



NEW!

NEW!

Occlusal Contouring and Polishing

Wagner Diamond Infused Berry Spirals provide a flexing action that allows fingers to get into difficult interproximal and occlusal areas.

- RedBerry® & BlueBerry® Spirals are used to make final adjustments and refine anatomy
- GoldenBerry® Spiral will create a high shine polish





Mastering Green State Zirconia

The GS Green State Contour™ System provides a variety of instruments that offer a safe and efficient way to remove sprue connectors and contour your pre sintered zirconia restorations.



GS Kit



GS Contour Diamond Blade

Our diamond coated blade was designed to open and contour interproximal areas. The blade can gently access tight areas without causing any damage. Blades are available in fine and ultra fine.



- GSBK Diamond Blade Kit**
- 1 Handle
 - 5 Blades Ultra Fine
 - 5 Blades Fine

ZHP Diamonds

Our 6 ZHP hand piece diamonds have a unique diamond shape and particle size. They provide a safe, gentle way to make subtle anatomical adjustments in the Green State.



Finale™ Final Contouring System

Finale's uniquely shaped fine diamond particles allow for gentle final contouring without heat transfer, and are particularly well suited for contouring thin margins. Finale™ points permit access to difficult to reach areas. Finale™ instruments are available in fine and medium grits; use Finale after using your RedBerry® or BlueBerry® instruments.



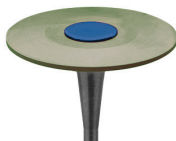
F Kit



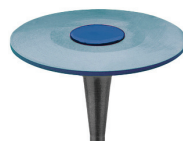
When Extremely Gentle Contouring or Polishing is Required

Cirrus represents an entirely new category of diamond infused instruments. When "Gentle" is required on virtually any type of restoration, these highly flexible instruments will provide the finessing needed. Excellent for laminates.

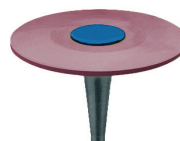
Knife Edge
26x2mm



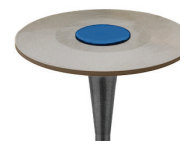
B811
Extra Coarse



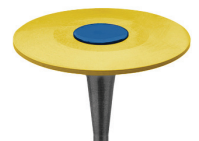
B821
Coarse



B831
Alloy Smoothing
Medium



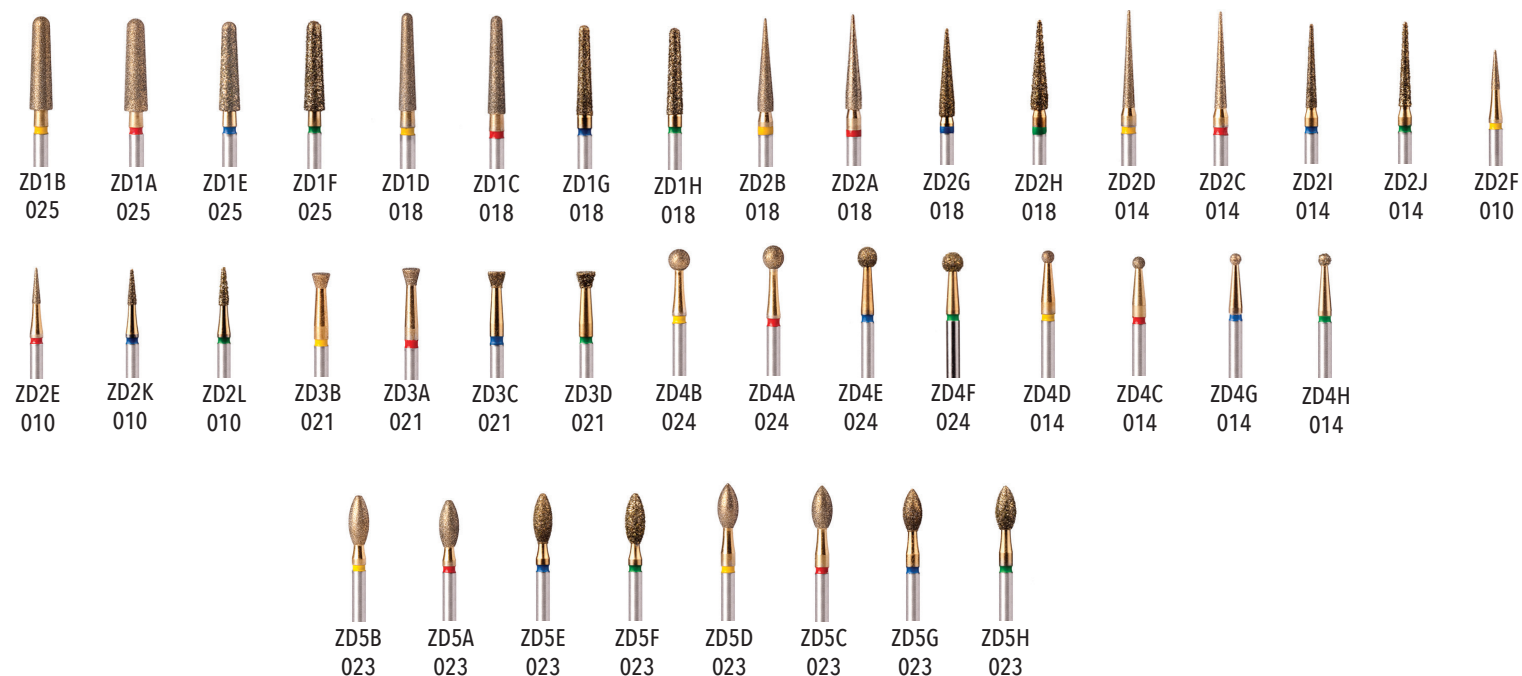
B841
Ceramic | Alloy Polishing
Creates a Mirror Shine



B851
Smoothes Alloy Imperfections
Ultra Fine

Friction Grip Diamonds For Zirconia & Lithium Disilicate Restorations

Our ZR FG diamonds have been layered with uniquely shaped particles that make them highly effective and safe to use with your all-ceramic restorations. Only minimal hand pressure is required to obtain maximum results. Our FG diamonds are long lasting, do not leave black marks, and are available in a variety of shapes and grits. Our ZR FG diamonds should always be used with irrigation to prevent heat transfer that can create micro fractures in your restorations. We can also produce custom shapes in a variety of grits to meet your specific needs.



Chairside Contour...Adjust...Polish...Or Remove

Zirconia, Lithium Disilicate, Nano Hybrid Composite



- Yellow Stripe-Superfine Diamond Grit
- Red Stripe-Fine Diamond Grit
- Blue Stripe-Medium Diamond Grit
- Green Stripe-Coarse Diamond Grit
- Double Blue Stripe-Zirconia Crown Removal

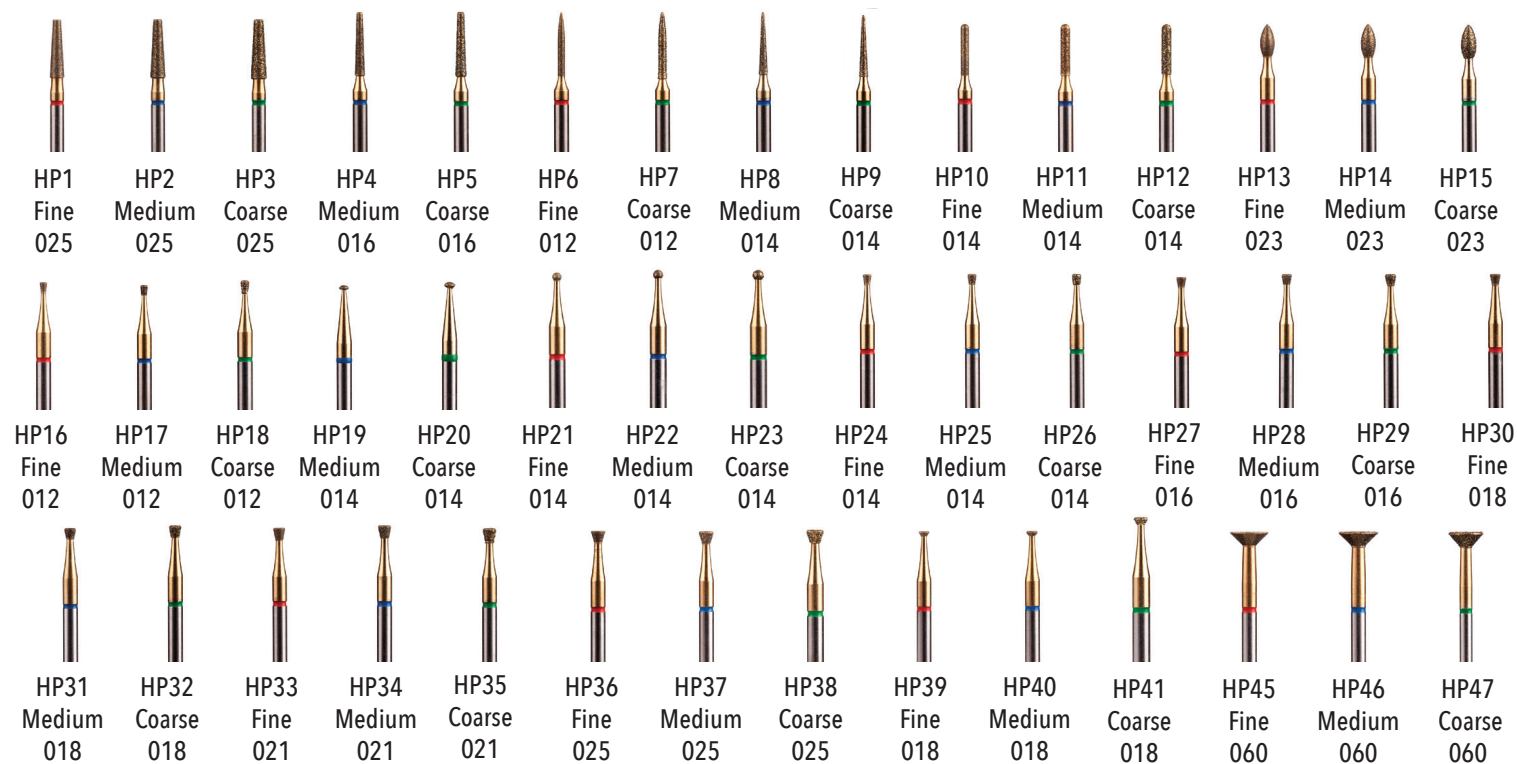
- 2 RA RedBerry Coarse
- 2 RA BlueBerry Medium
- 4 RA GoldenBerry Fine High Shine
- 7 FG For Adjusting
- 2 FG For Removal



RA | FG Kit

Handpiece Diamonds

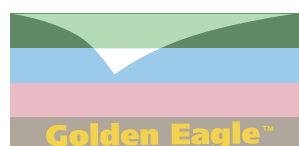
Multi layered for extended use. Recommended for all ceramic restorations.



ZRHP Diamonds- When irrigation is not available.

For All Ceramic Restorations

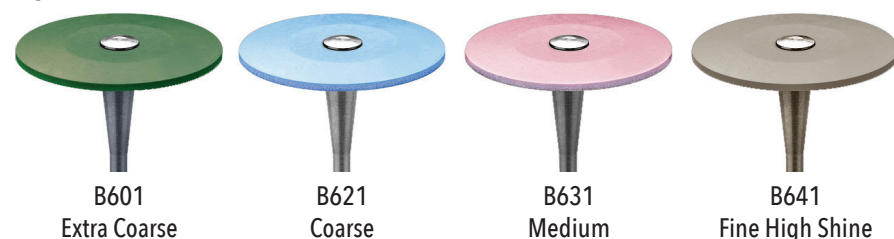
Our ZR Hand Piece diamonds provide a safe alternative to using FG diamonds when irrigation is not available. They are the perfect solution for final, minor contouring of all ceramic restorations.



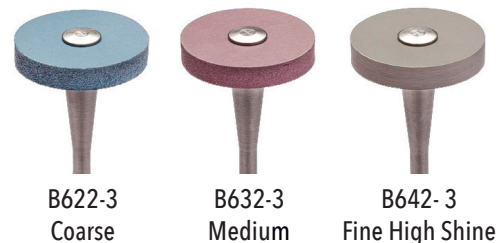
Golden Eagle For Layered Ceramics

Our Golden Eagles are infused with a high percentage of diamond and contour layered ceramic beautifully. We also removed the yellow centers to give you more usable disc.

Knife Edge 26x2mm



Flat Edged Wheels 17x3mm



Golden Eagle Kit

26mm: Extra coarse, coarse, medium, fine-high shine
17mm: coarse, medium, fine
Points: coarse, fine



Large Point 5.5x18mm



Small Point 3.3x7.5mm

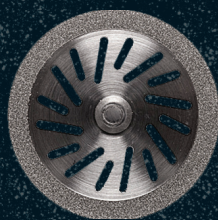


Diamond Discs For Zirconia

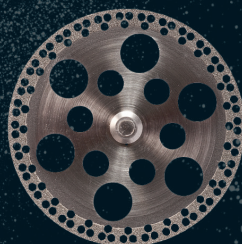
While a traditional diamond disc works well with high fusing feldspathic ceramic, you have probably noticed that it's less effective and does not last as long when used with zirconia or lithium disilicate. Our ZR discs have a special diamond shape, grit, and tighter particle placement. They are more effective, last longer and stay cooler. Our 38mm and 30mm discs are recommended for cutting pressed sprues.



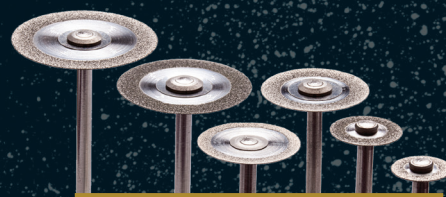
ZR49-19
ZR49-22



ITEM ZR3030
ZR 30x30mm



ITEM ZR3836
ZR 38x36mm



ITEM AVAILABLE IN DIAMETER-THICKNESS:

ZR0824	08 mm x 0.24 mm
ZR1022	10 mm x 0.22 mm
ZR1422	14 mm x 0.22 mm
ZR1622	16 mm x 0.22 mm
ZR1922	19 mm x 0.22 mm
ZR1924	19 mm x 0.24 mm
ZR1926	19 mm x 0.26 mm
ZR2222	22 mm x 0.22 mm
ZR2224	22 mm x 0.24 mm
ZR2226	22 mm x 0.26 mm
ZR3030	30 mm x 0.30 mm
ZR3836	38 mm x 0.36 mm



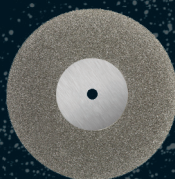
Traditional Diamond Discs

Item-Grit-Diameter

M=Medium 514-Thickness .17

C=Coarse 524-Thickness .27

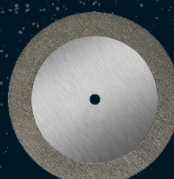
Ceramic Contouring/Separation



24-M-22
24-C-22

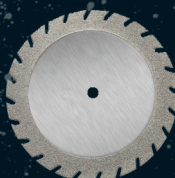


28-M-22
28-C-22

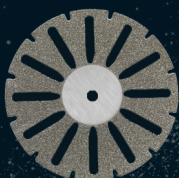


31-M-22
31-C-22

Acrylic Separation/Contouring

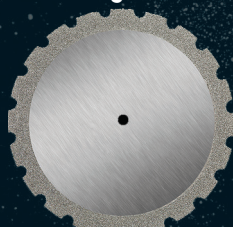


29-M-22
29-C-22

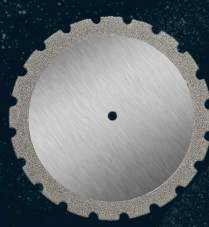


34-M-22
34-C-22

Die Trimming

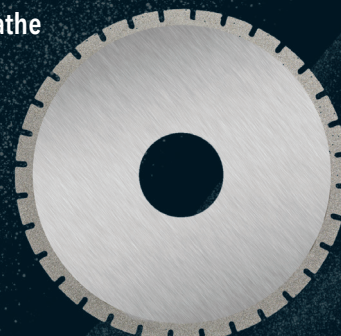


40-M-40 40-M-40
40-C-40

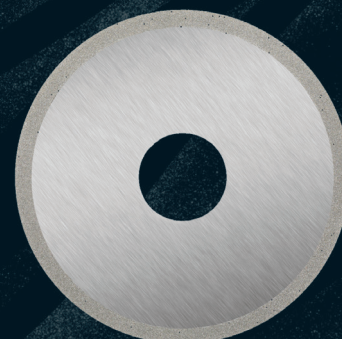


52-M-30
52-C-30

Lathe



100-M-80
100-C-80



99-C-70
101-M-80
101-C-80



SRS™ Sprue Removal System For Pre Sintered Blue State Lithium Disilicate 2 Instruments In 1

Pre sintered, blue state milled lithium disilicate, is a hardened material. As a result, the process of sprue connector removal and smoothing can be time consuming and difficult.

Our SRS™ Sprue Removal System., quickly removes the connectors and then smoothes and polishes at the connector/restoration interface.



Step 1

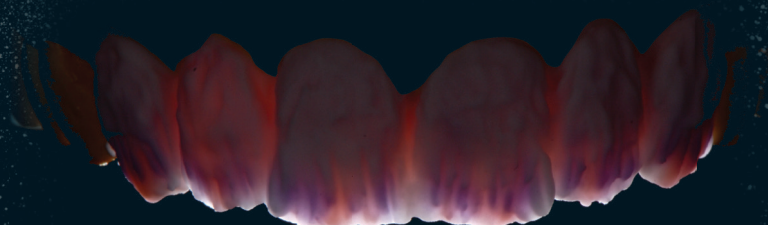
The white diamond infused lower section quickly and safely removes the sprue connector.

Step 2

The blue upper section is actually our diamond infused BlueBerry™. This second step smoothes and polishes at the connector/restoration interface.



SRS100

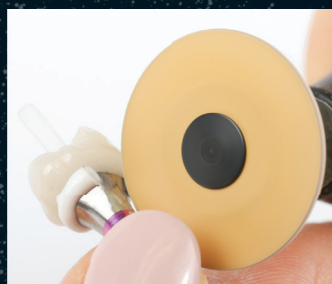


panther

FOR ALL-CERAMIC RESTORATIONS & ABUTMENTS

When processing one-piece and two-piece abutments, this instrument is the first step towards improved tissue deposition.

Used for coarse reduction of excess adhesive on hybrid abutments.



Wagner
Precision Rotary Instruments
Brewster, MA 02631



WagnerRotary.com